



# **Norwich Western Link**

## **Transport Assessment**

### **Appendix 4: Cycling Isochrones**

Author: WSP

Document Reference: 4.01.04

Version Number: 00

Date: March 2024



## Contents

1	Cycling Isochrone Maps.....	3
	Figure 1 Attlebridge Cycling Accessibility.....	4
	Figure 2 Costessey Cycling Accessibility.....	5
	Figure 3 Drayton Cycling Accessibility.....	6
	Figure 4 Hockering Cycling Accessibility.....	7
	Figure 5 Honingham Cycling Accessibility.....	8
	Figure 6 Horsford Cycling Accessibility.....	9
	Figure 7 Lenwade Cycling Accessibility.....	10
	Figure 8 Mattishall Cycling Accessibility.....	11
	Figure 9 Ringland Cycling Accessibility.....	12
	Figure 10 Taverham Cycling Accessibility.....	13
	Figure 11 Weston Longville Cycling Accessibility.....	14

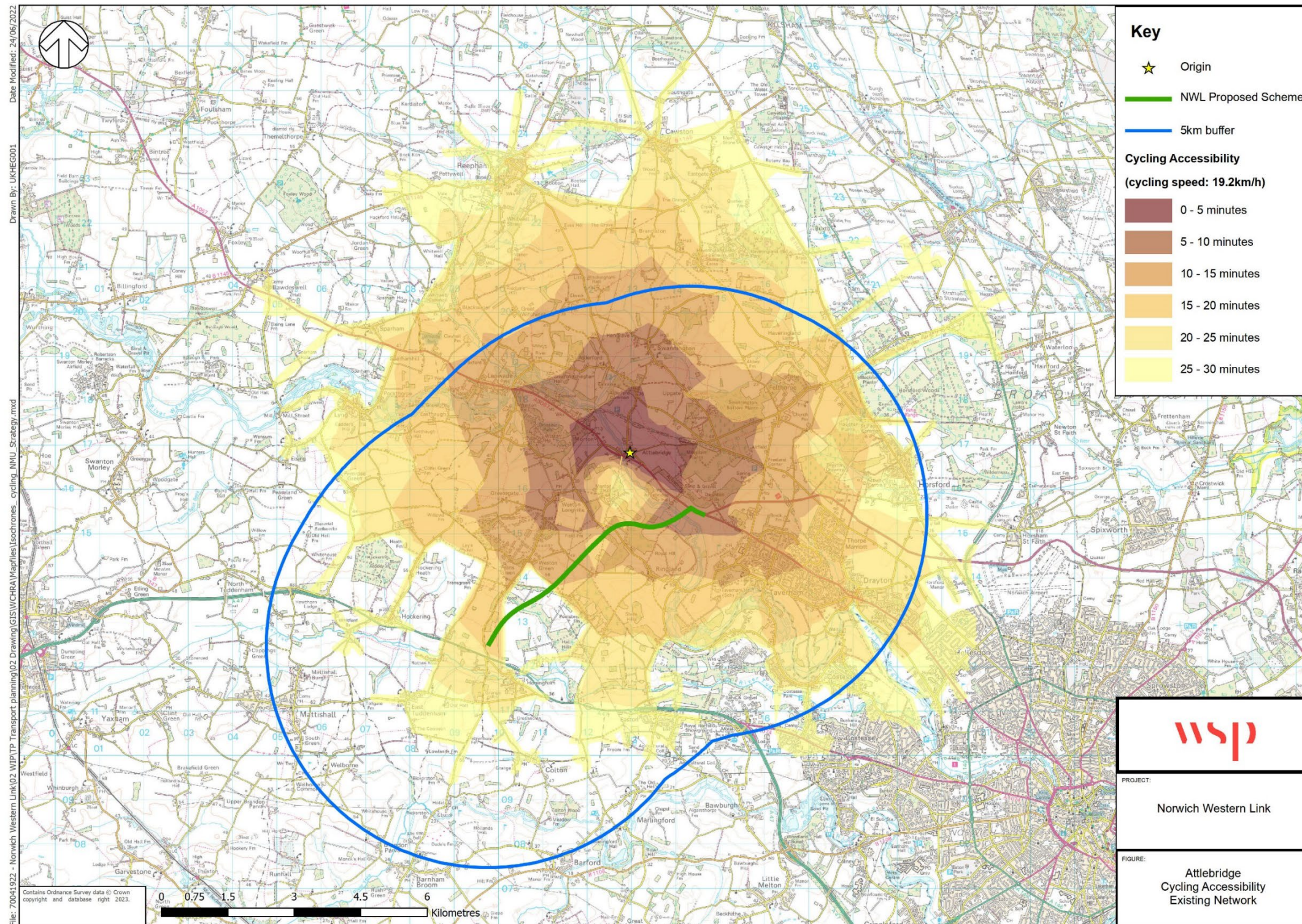


## **1 Cycling Isochrone Maps**

1.1.1 A series of map showing cycling accessibility from an origin within various towns in a 5km straight line radius around the Norwich Western Link preferred route. The towns within the 5km study area include Attlebridge, Costessey, Drayton, Hockering, Honingham, Horsford, Lenwade, Mattishall, Ringland, Taverham and Weston Longville. The maps provide accessibility in 5-minute intervals up to 30 minutes, assuming a cycling speed of 19.2km/h.



**Figure 1 Attlebridge Cycling Accessibility**





**Figure 2 Costessey Cycling Accessibility**

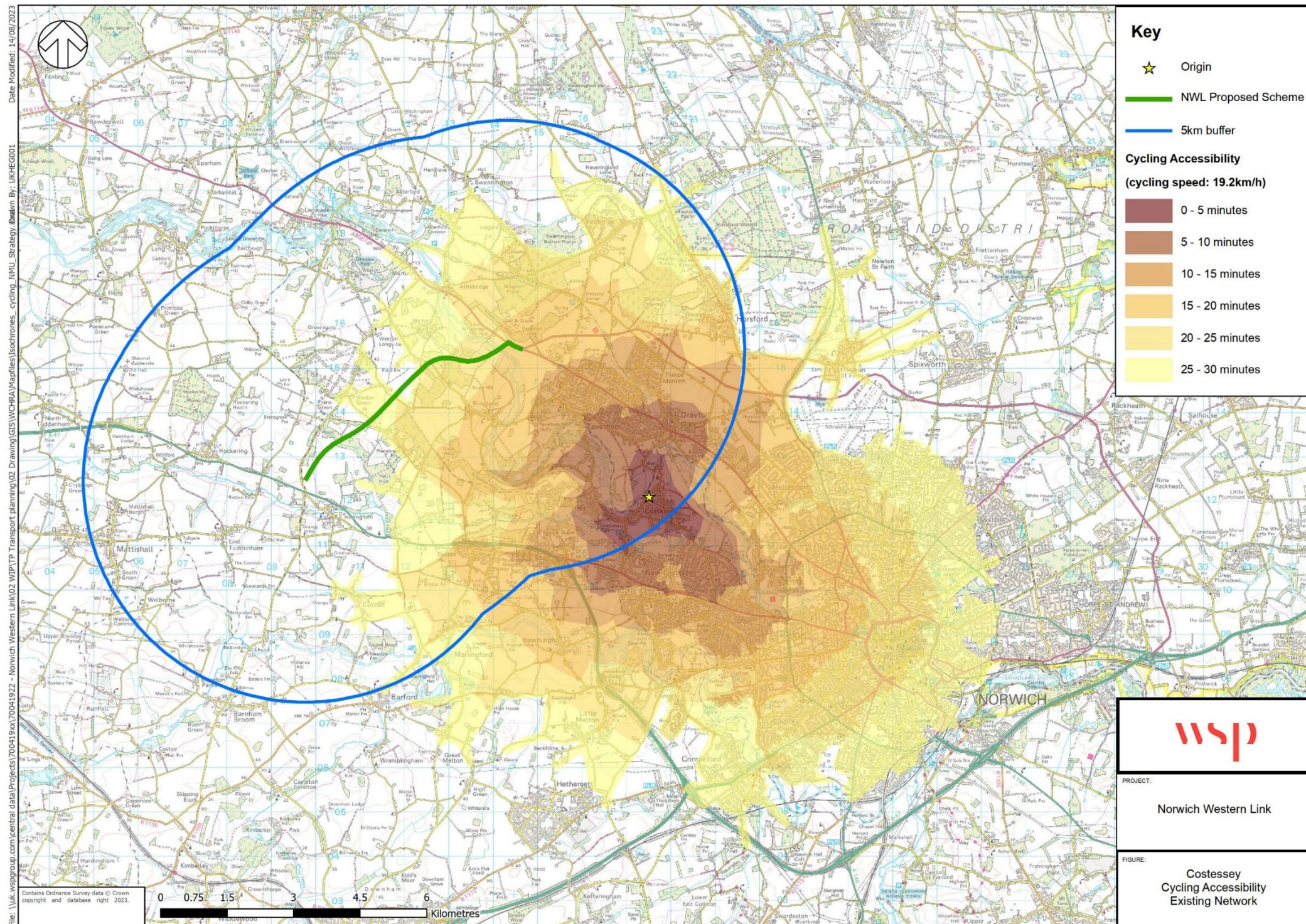
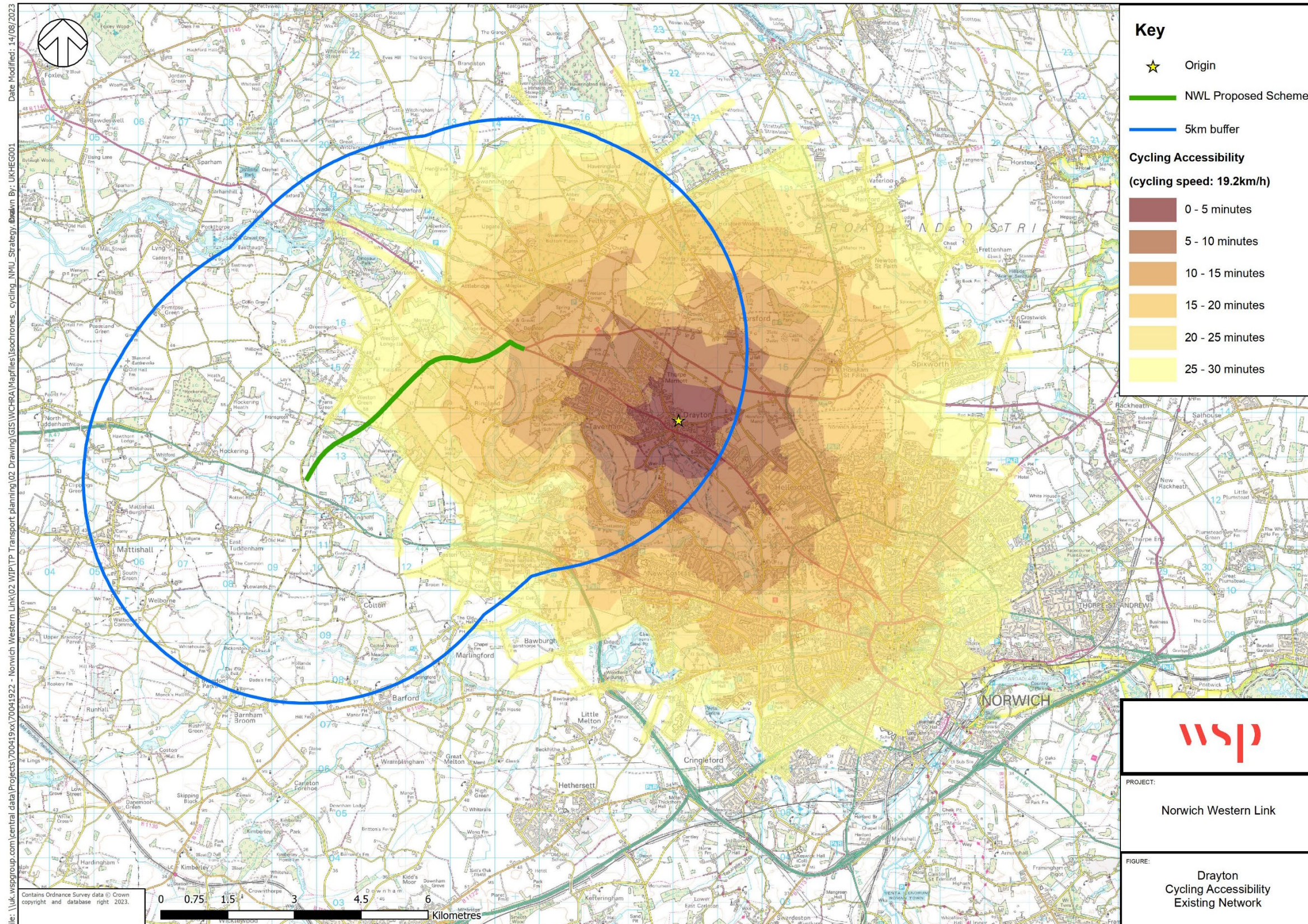




Figure 3 Drayton Cycling Accessibility





**Figure 4 Hockering Cycling Accessibility**

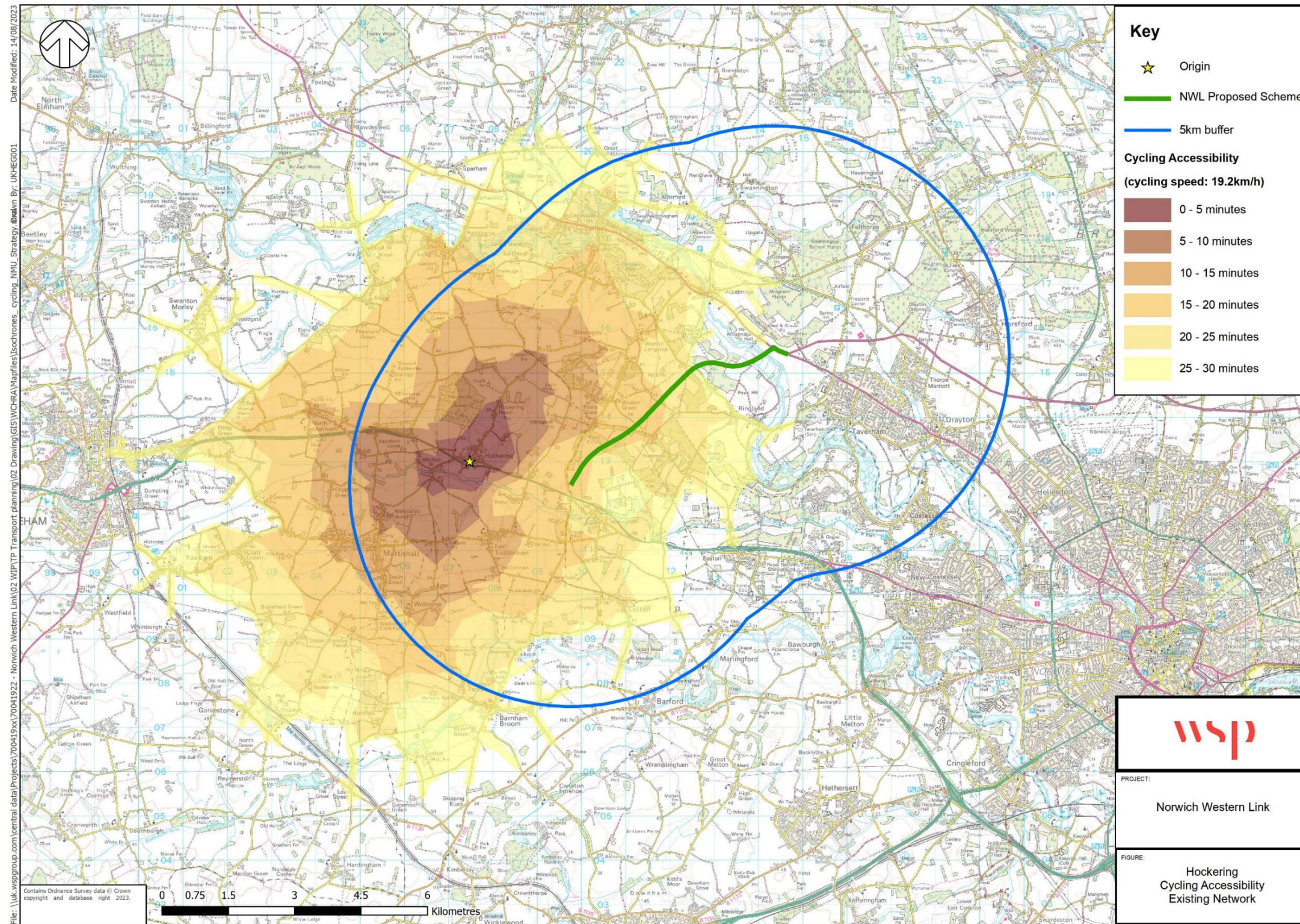
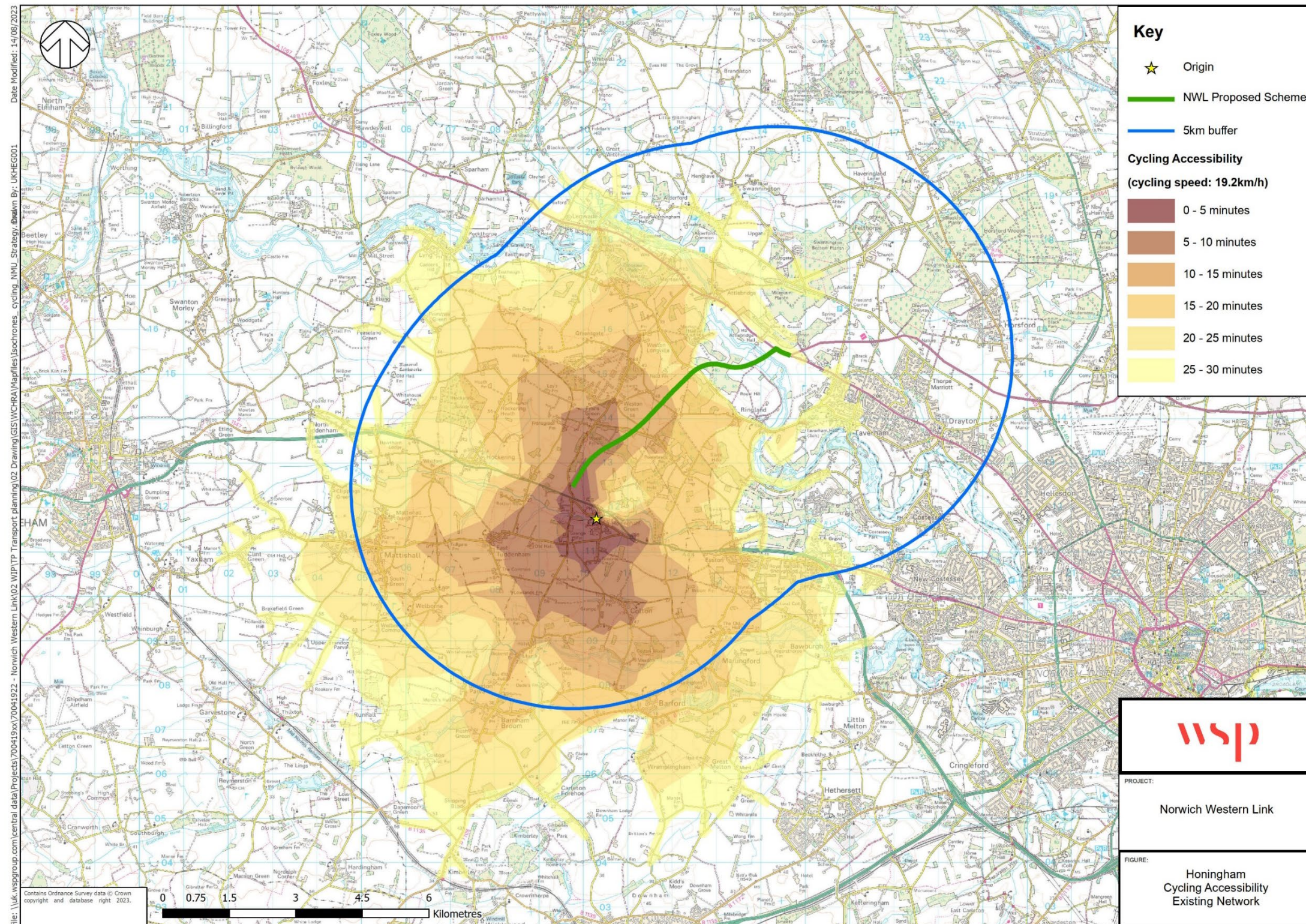


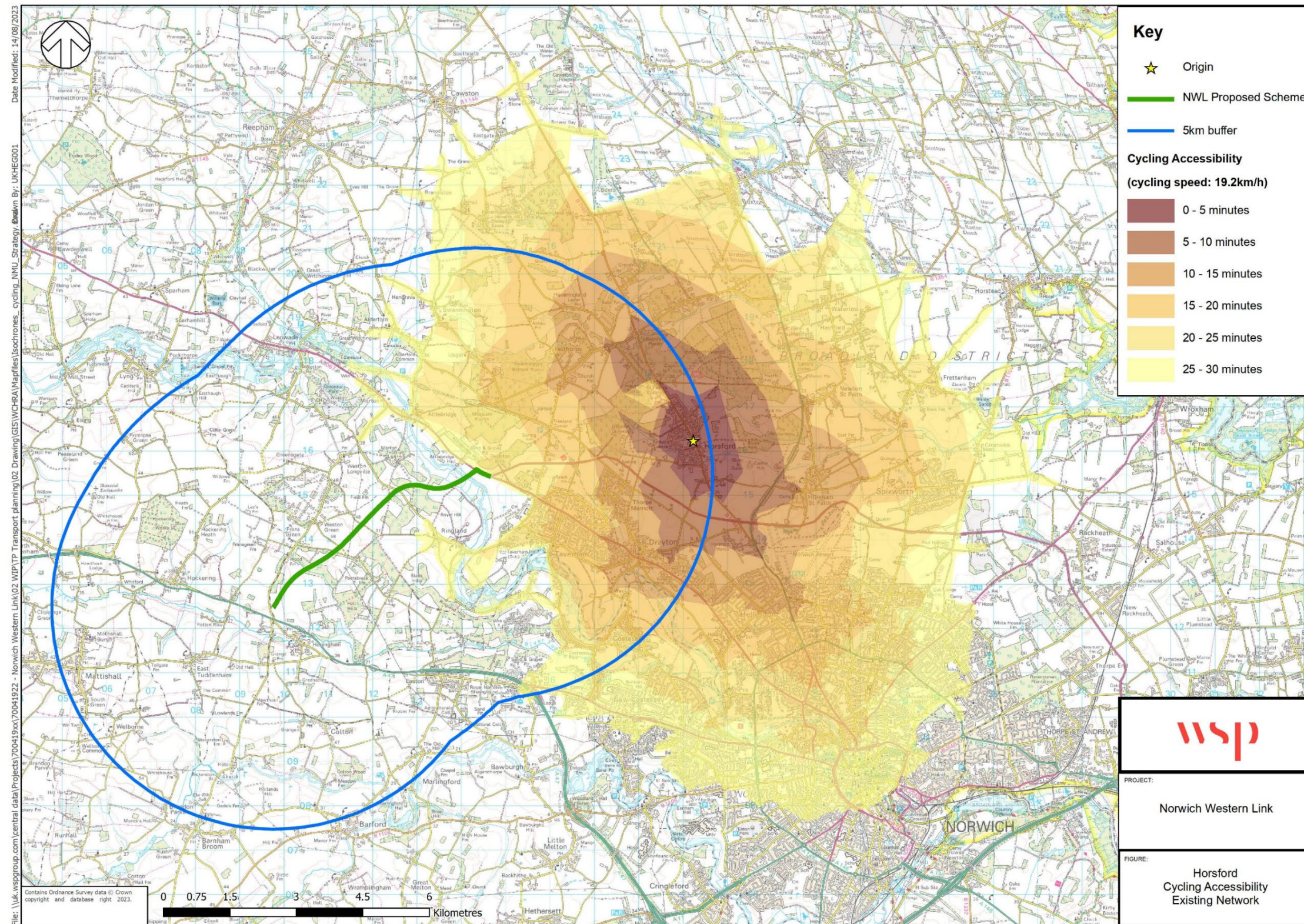


Figure 5 Honingham Cycling Accessibility



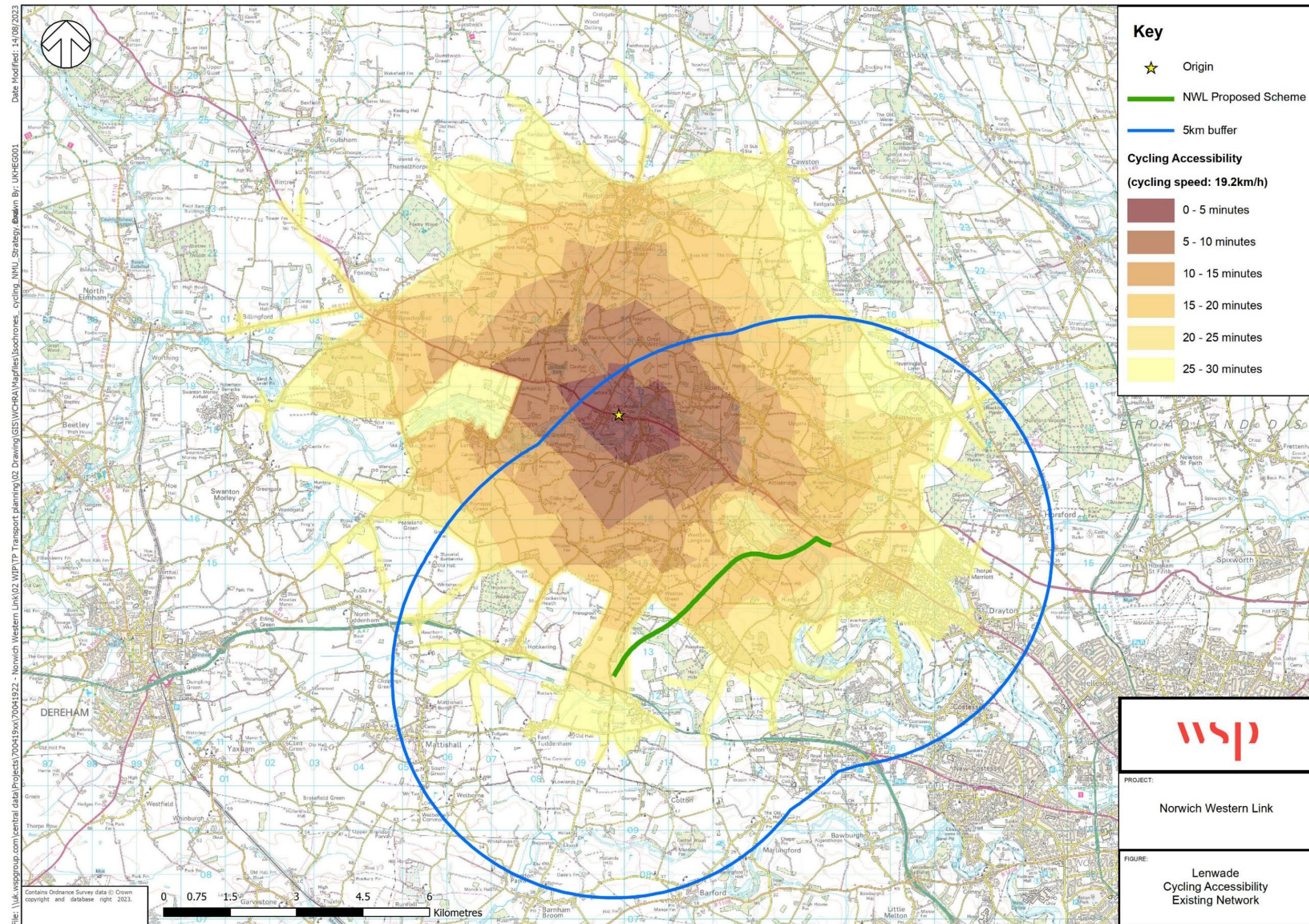


**Figure 6 Horsford Cycling Accessibility**



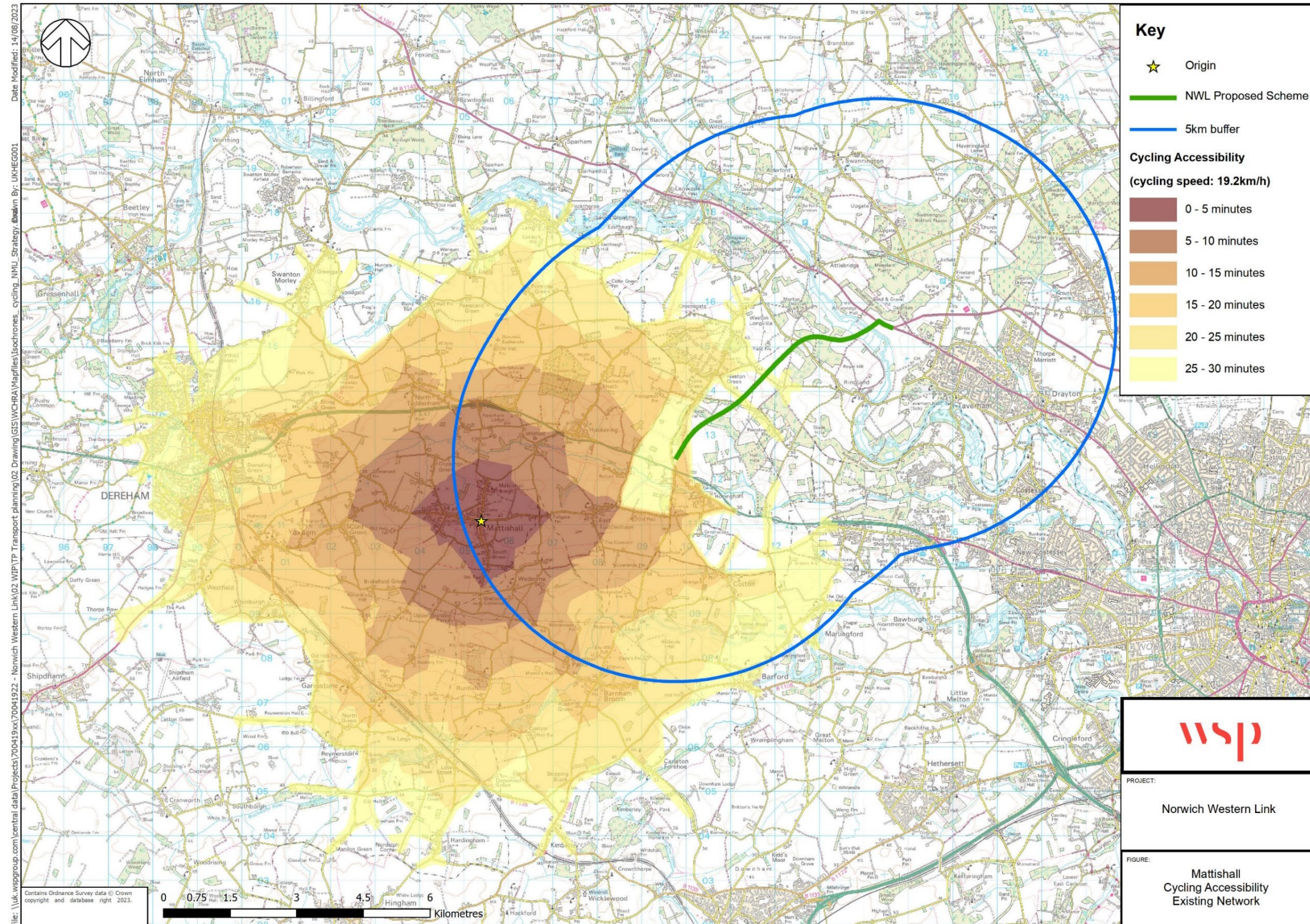


**Figure 7 Lenwade Cycling Accessibility**





**Figure 8 Mattishall Cycling Accessibility**





**Figure 9 Ringland Cycling Accessibility**

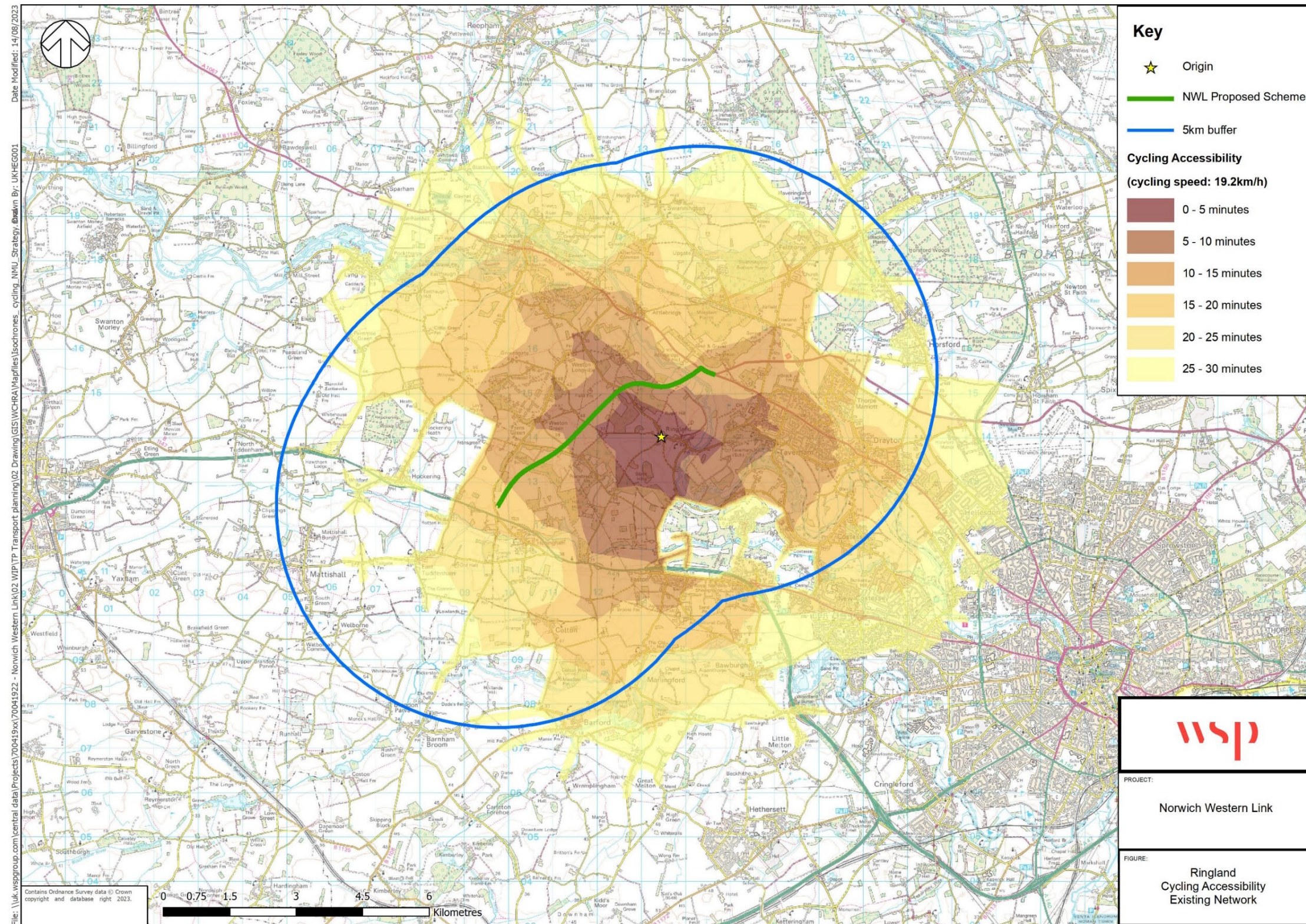
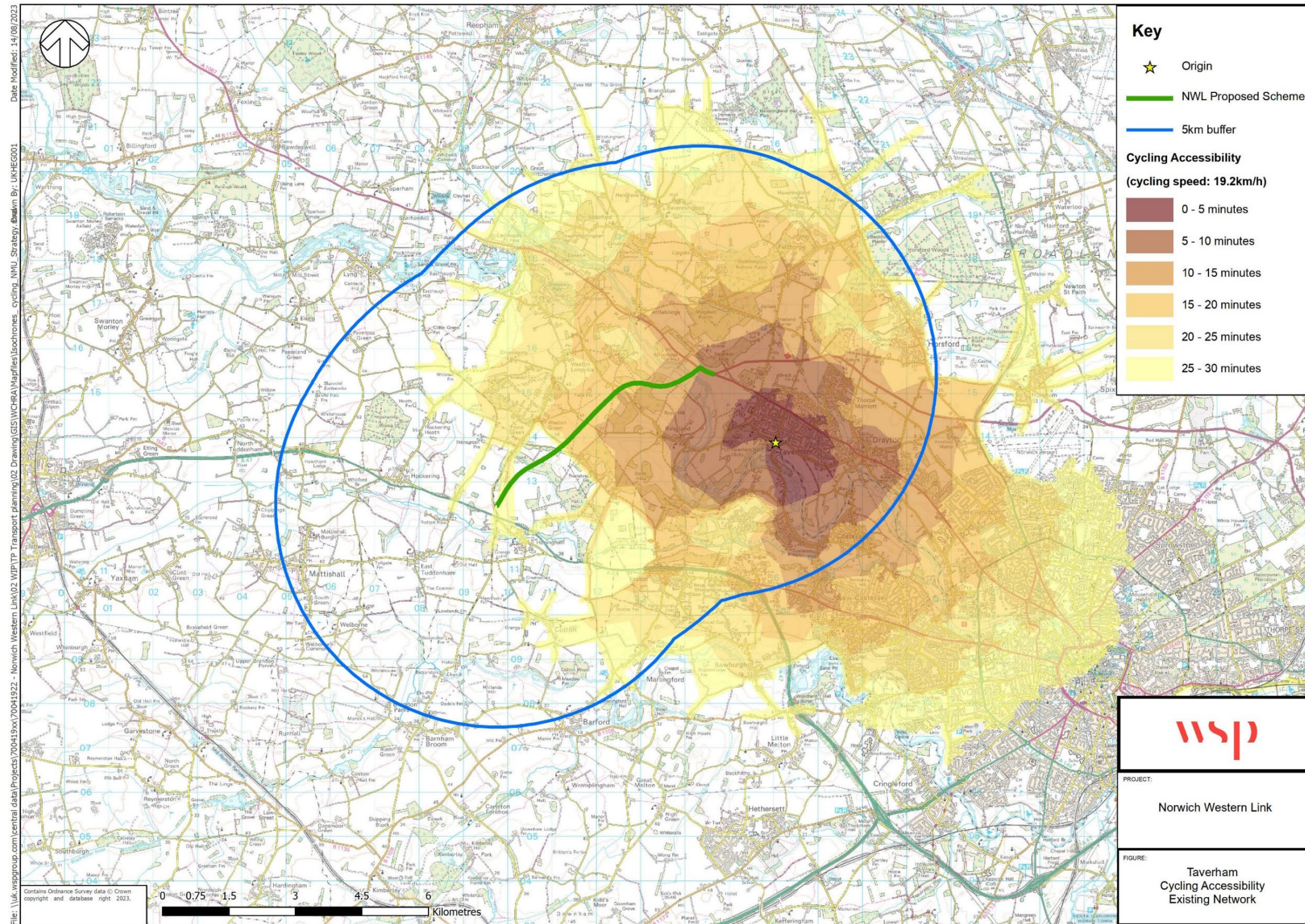




Figure 10 Taverham Cycling Accessibility





**Figure 11 Weston Longville Cycling Accessibility**

